

# Losonante

Immersive Audio Experience



... a very special listening experience

Losofnante

**immersive**

---

**sensual**

---

**unforgettable**



... listen to your body

Losoñnante



**intensive sound perception**

---

**the magic of bone conduction**

---

**technology in the service of emotions**

**quite and low-noise**

---

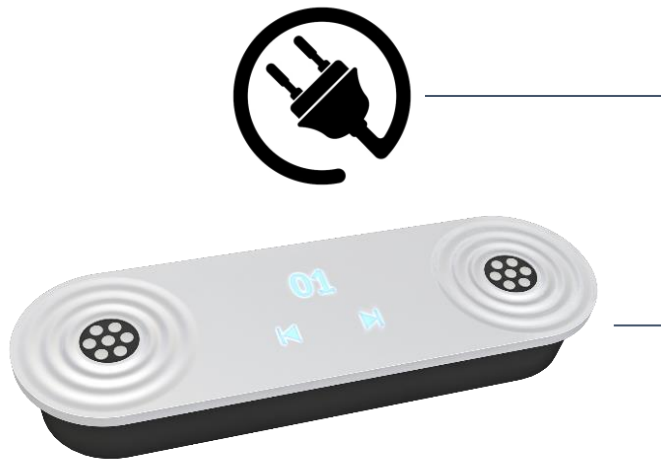
**no headphone needed**

---

**suitable for indoor and outdoor use**



**Listening Station « Power »**



**Listening Station « Battery »**



**Listening Station « Video »**





**automatic sound reproduction by placing the elbows on the sensors**

---

**touch the underside of your hand to the outer ear**

---

**change files / pause function**

Losonante  
N° : losonante\_058

Paramètres

Volume  
37

Balance  
gauche 0 droite

Luminosité  
5

Pause avant arrêt (en seconde)  
3

Liste des médias





Option écran externe

Losonante  
N° : losonante\_058

Paramètres

Liste des médias

Pistes chargées

rang	affichage	nom	actions
1	01	Beethoven.mp3	 
2	02	Rhinoceros.mp3	 

+ Ajouter

Option écran externe

intuitive user interface

---

easy replacement of audio files

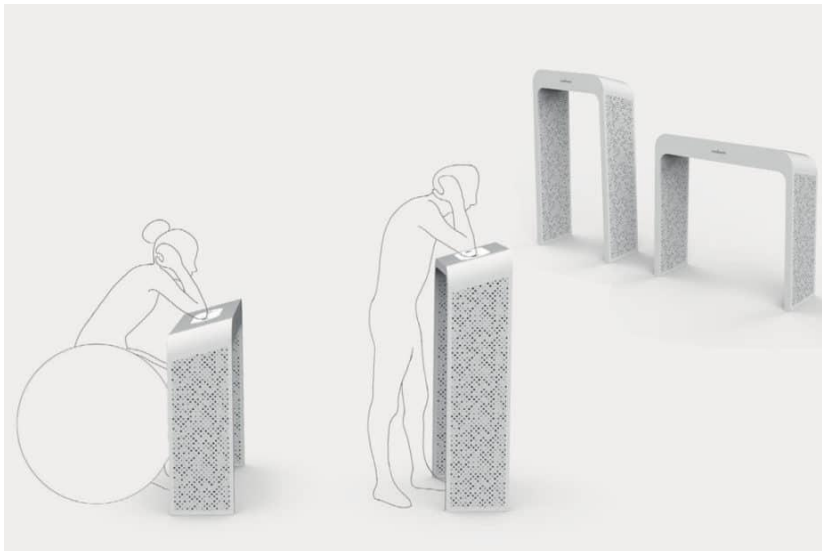
---

Automatic parameter setting



**standardised bar tables and school desks for indoor and outdoor use**

---



**customised tables and table tops for indoor and outdoor use**



**Design of installation options**

---

**Sound Design**

---

**Rental Service**

**Consultancy**

---

**Delivery Service**

---

**Maintenance Contracts**



Looking for a customised solution?

**varied and interesting content**

---

**a place for creativity**

---

**a few precious minutes**



# ... our references

Losonnante





## ... focus on sound and emotions

### Cultural sites and museums

#### the requirement

The reconstructed Roman fortifications around Alésia are to be enhanced by bringing the battle back to life (Alise-Sainte-Reine/France).

#### the solution

An audio station was installed opposite the fortifications. An acoustic reconstruction of the sound was carried out, telling the story from the point of view of the romans in their camp. The audio station also plays sounds of the celtic wind instrument « Carnyx ».

# ... a unique concept showcases cultural heritage

Losonante

## Places of interest

### the requirement

SMIDDEST (Syndicat Mixte pour le Développement Durable de l'Estuaire de la Gironde) wanted a solution to make the work created by the Compagnie des Musiques Téléscompques at the Courdouan Lighthouse accessible to the public. The sound recordings were made in the lighthouse to capture the unique atmosphere of the place.

### the solution

For this project, a special table with a built-in listening station was hoisted into the tower by crane. Since the installation is located in an inaccessible place outside of the visitor season, maintenance is carried out by remote monitoring.



## Museography and Scenography

### the requirement

Listening to the sound of food textures in the main hall of the « Banquet » exhibition. The exhibition is very noisy. The principle of bone conduction is used to minimise ambient noise. The travelling exhibition will be shown all over the world over a period of four years.

### the solution

A text written and read by columnist and chef Arnaud Daguin was recorded and translated into English and Spanish. The furniture for the two listening stations was made in two different sizes by the Cité des Sciences team.

# ... inspire young and old with a new world of sound

Lesotho

## Amusement and Adventure parks

### the requirement

Terra Botanica (Angers/France) wanted to appeal to the senses of its visitors in a new immersive space, to rediscover the joy of listening to birdsong. The team was therefore looking for an audio solution that was suitable for the outdoor environment and would properly showcase the bird calls of different species.

### the solution

Six outdoor listening stations were installed at two different heights for children and adults. With our help, the park team designed tables for the listening stations that blend perfectly into the scenery. A naturalist tells exciting stories about the characteristics of the birds as a «red thread».





## *Festivals & Events*

### the requirement

**Sound reinforcement for a screen showing an anamorphic animation of the new BMW iX2. The event agency JCDecaux Live was looking for a simple audio solution that was compatible with the 3D technology and did not cause any noise pollution.**

### the solution

The bar table with the audio station was positioned so that the user can enjoy the anamorphic effect without disturbing the other visitors.



# ... enhancement of landscapes and areas

## Area planing and urban development

### the requirement

Since 2015, the city of Saint-Étienne has been looking for and installing innovative prototypes of furniture for various locations in the city at each edition of the international Design Biennale.

### the solution

The jury of the Saint-Étienne International Design Biennale selected our audio stations for their quality and robustness as a tool for enhancing urban space.





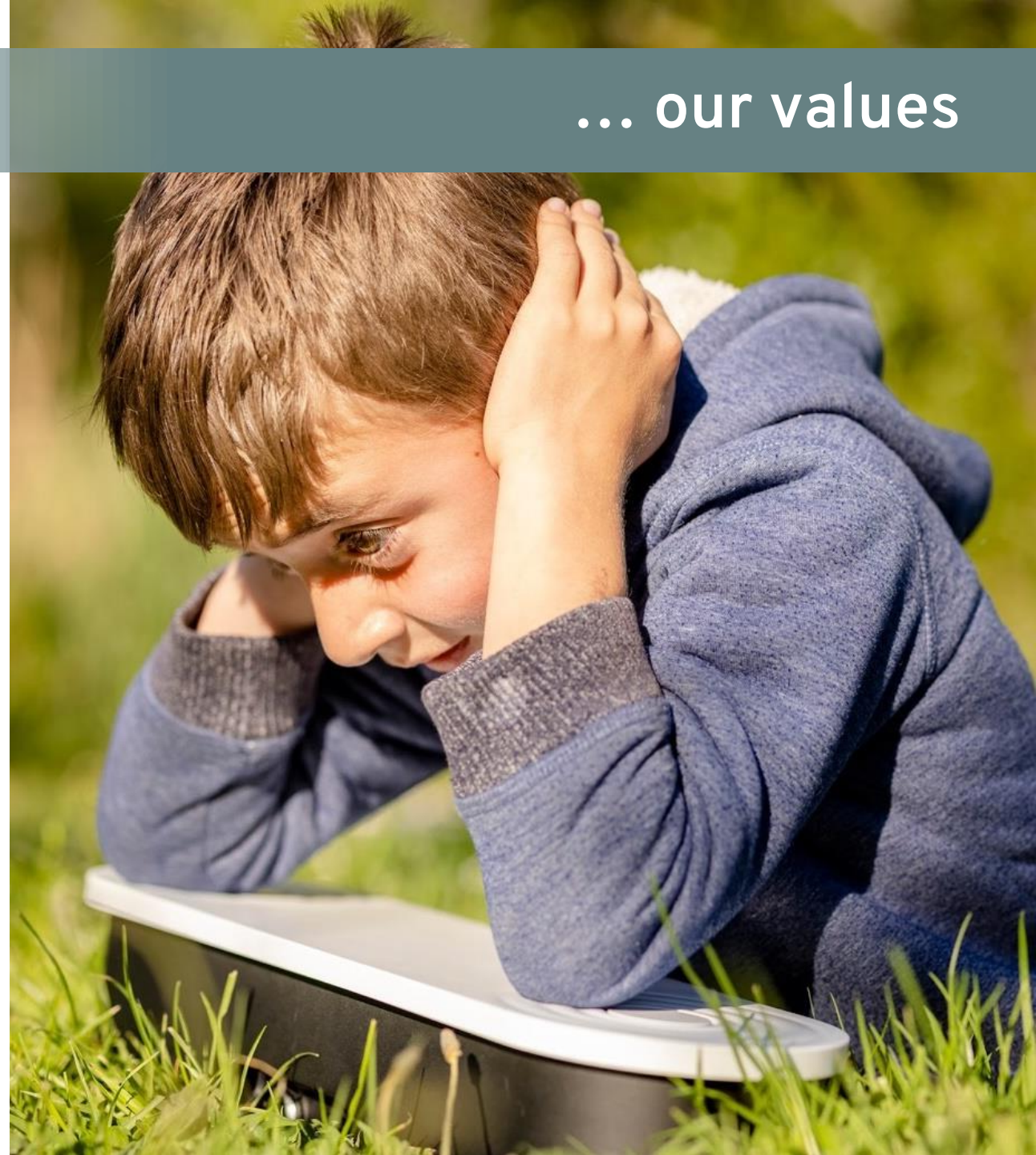
**Made in France**



**Eco-friendly design and concept**



**Integrity**



# Losonante

Immersive Audio Experience

Request our price list today!

Book a demo appointment today!

## Contact Address

**Crystal Display Electronics AG**  
**Zürcherstrasse 37a**  
**8852 Altendorf**  
**Switzerland**

**sales@movebox.shop**  
**+41 (0)55 451 54 54**